

## Need help?

### User manual

See the user manual on the CD-ROM that is supplied with this product.

### Online

Go to [www.philips.com/dictation](http://www.philips.com/dictation)

## Benötigen Sie Hilfe?

### Benutzerhandbuch

Weitere Informationen finden Sie im Benutzerhandbuch auf der CD-ROM, die im Lieferumfang dieses Produktes enthalten ist.

### Online

Besuchen Sie [www.philips.com/dictation](http://www.philips.com/dictation)

## Besoin d'aide ?

### Manuel d'utilisation

Consultez le manuel d'utilisation figurant sur le CD-ROM fourni avec ce produit.

### En ligne

Visitez notre site [www.philips.com/dictation](http://www.philips.com/dictation)

## ¿Necesita ayuda?

### Manual del usuario

Consulte el manual del usuario en el CD-ROM que se incluye con el producto.

### En línea

Dirijase a [www.philips.com/dictation](http://www.philips.com/dictation)

## Per assistenza

### Manuale di istruzioni

Consultare il manuale di istruzioni presente sul CD-ROM fornito con questo prodotto.

### Online

Andare su [www.philips.com/dictation](http://www.philips.com/dictation)

## Hulp nodig?

### Gebruikershandleiding

Raadpleeg de gebruikershandleiding op de CD-ROM die bij het product is meegeleverd.

### Online

Ga naar [www.philips.com/dictation](http://www.philips.com/dictation)

## Behöver du hjälp?

### Användarhandbok

Se användarhandboken på CD-ROM-skivan som medföljde produkten.

### Online

Gå till [www.philips.com/dictation](http://www.philips.com/dictation)



© 2010 Royal Philips Electronics.

All rights reserved.

Specifications are subject to change without notice.

Trademarks are the property of Royal Philips

Electronics or their respective owners.

Document Version 1.0, 05/05/2010.

5103 109 9743.1

For product information and support, visit  
[www.philips.com/dictation](http://www.philips.com/dictation)

## SPEECHMIKE



**LFH3210**  
without SpeechExec  
dictation software

**LFH3215**  
with SpeechExec  
dictation software

**LFH3310**  
with integrated  
bar-code scanner

**EN** Quick start guide

**DE** Kurzanleitung

**FR** Guide de démarrage rapide

**ES** Guía de inicio rápido

**IT** Guida rapida di introduzione

**NL** Snelle startgids

**SV** Snabbstartsguide

**PHILIPS**

## What's in the box

- Verpackungsinhalt
- Contenu de l'emballage
- Contenido del embalaje
- Contenuto della confezione
- Wat is meegeleverd
- Förpackningens innehåll



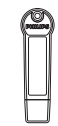
- Dictation microphone
- Diktiermikrofon
- Microphone de dictée
- Microfono de dictado
- Microfono di dettatura
- Dicteermicrofoon
- Dikteringsmikrofon



- USB cable
- USB-Kabel
- Câble USB
- Cable USB
- Cavo USB
- USB-kabel
- USB-kabel



- CD-ROM
- CD-ROM
- CD-ROM
- CD-ROM
- CD-ROM
- CD-ROM
- CD-ROM



- USB license key (LFH3215)
- USB-Lizenzschlüssel (LFH3215)
- Clé de licence USB (LFH3215)
- Llave de licencia USB (LFH3215)
- Chiave di licenza USB (LFH3215)
- USB-licentiesleutel (LFH3215)
- USB licensnyckel (LFH3215)

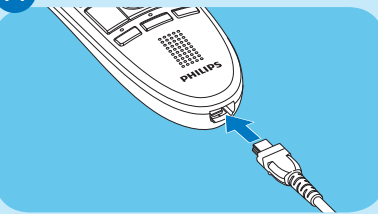


- Quick start guide
- Kurzanleitung
- Guide de démarrage rapide
- Guía de inicio rápido
- Guida rapida di introduzione
- Snelle startgids
- Snabbstartsguide

# 1 Install

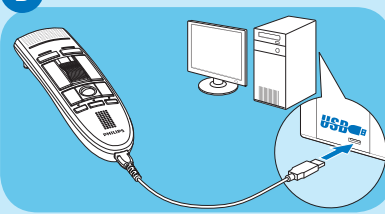
- Installation
- Installation
- Instalación
- Installazione
- Installatie
- Installation

## A Connect the USB cable



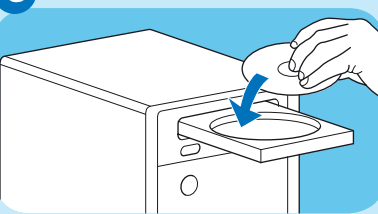
- USB-Kabel anschließen
- Branchez le câble USB
- Conecte el cable USB
- Collegare il cavo USB
- Sluit de USB-kabel aan
- Anslut USB-kabeln

## B Connect to computer



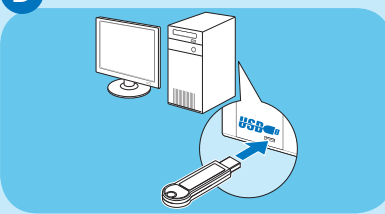
- Mit Computer verbinden
- Brancher à l'ordinateur
- Conectar al ordenador
- Connettere al computer
- Verbinden met computer
- Anslut till datorn

## C Install the software



- Software installieren
- Installation du logiciel
- Instalar el programa
- Installare il software
- De software installeren
- Installera programvaran

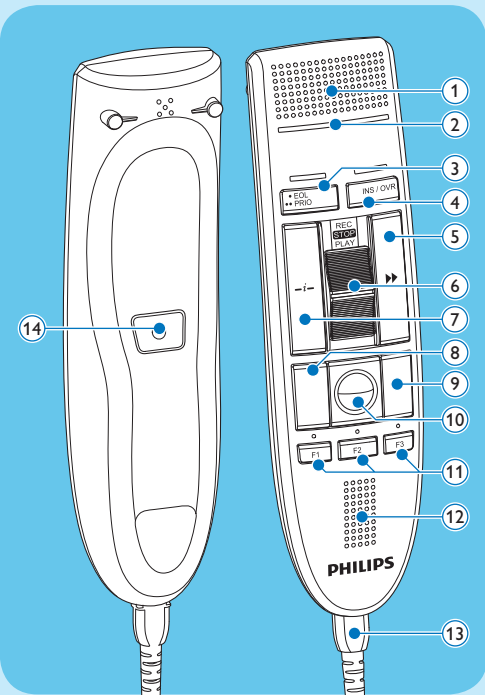
## D Software licence (LFH3215)



- Softwarelizenz (LFH3215)
- Licence logiciel (LFH3215)
- Licencia de software (LFH3215)
- Licenza software (LFH3215)
- Softwarelicentie (LFH3215)
- Programvarulicens (LFH3215)

# 2 Overview

- Übersicht
- Présentation
- Descripción general
- Panoramica
- Overzicht
- Översikt



- Microphone ● Mikrofon ● Microphone ● Micrófono ● Microfono ● Microfoon ● Mikrofön
- Record indicator light ● Aufnahme-Kontrolleuchte ● Voyant d'enregistrement ● Lámpara indicadora de grabación ● Indicatore luminoso di registrazione ● Controlelampje opname ● Indikatorlampja inspelning
- End-of-letter (EOL), priority ● Briefende (EOL), Priorität ● Fin-de-lettre (EOL), priorité ● Fin-de-carta (EOL), prioridad ● Fine-lettera (EOL), priorità ● Einde-brief (EOL), prioriteit ● End-of-letter (EOL), prioritet
- Insert/overwrite ● Einfügen/Überschreiben ● Insérer/écraser ● Insertar/sobreescribir ● Inserisci/sovraregistra ● Invoegen/overschrijven ● Lägg till/Skriv över

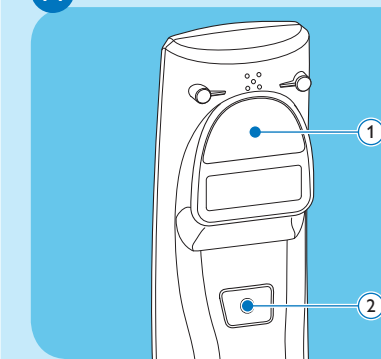
- Fast forward ● Schneller Vorlauf ● Avance rapide ● Avance rápido ● Avanti veloce ● Snel vooruit ● Snabbspola framåt
- Slide switch (record, stop, play, rewind) ● Schiebeshalter (Aufnahme, Stopp, Wiedergabe, Rücklauf) ● Interrupteur à curseur (enregistrement, arrêt, lecture, retour) ● Interruptor deslizante (grabar, detener, reproducir, rebobinado) ● Selettore (registra, stop, riproduci, riavvolgi) ● Schuifschakelaar (opname, stop, afspelen, terug) ● Skjutreglage (spela in, stopp, spela upp, spola bakåt)
- Instruction ● Anweisung ● Instruction
- Left mouse button ● Linke Maustaste ● Bouton gauche de souris ● Botón izquierdo del ratón ● Pulsante sinistro del mouse ● Linker muisknop ● Vänster musknapp ● Bouton droit de souris ● Botón derecho del ratón ● Pulsante destro del mouse ● Rechter muisknop ● Höger musknapp

- Trackball/left mouse button ● Trackball/linke Maustaste ● Boule de commande/bouton gauche de souris ● Bola de mando/botón izquierdo del ratón ● Trackball/pulsante sinistro del mouse ● Trackball/linker muisknop ● Styrkula/vänster musknapp
- Programmable function keys ● Programmierbare Funktionstasten ● Touches de fonctions programmables ● Botones con función programable ● Pulsanti funzione programmabili ● Programmeerbare functietoetsen ● Programmerbara funktionsknappar
- Speaker ● Lautsprecher ● Haut-parleur ● Altavoz ● Altoparlante ● Luidspreker ● Högtalare
- USB cable ● USB-kabel ● Câble USB ● Cable USB ● Cavo USB ● USB-kabel ● USB-kabel
- Left mouse button ● Linke Maustaste ● Bouton gauche de souris ● Botón izquierdo del rató ● Pulsante sinistro del mouse ● Linker muisknop ● Vänster musknapp

# 3 Bar-code scanner (LFH3310 only)

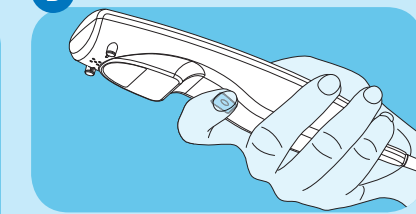
- Barcodeleser
- Scanner de code-barres
- Escáner de código de barras
- Scanner codici a barre
- Barcodeleser
- Streckkodsläsare

## A Overview



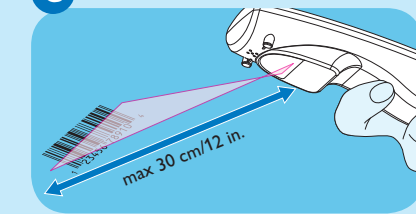
- Bar-code scanner ● Barcodeleser ● Scanner de code-barres ● Escáner de código de barras ● Scanner codici a barre ● Barcodeleser ● Streckkodsläsare
- Scan button ● Scan-Taste ● Bouton de scan ● Botón escanear ● Pulsante di scansione ● Scanknop ● Skanningsknapp

## B Press the scan button



- Scan-Taste drücken
- Appuyez sur le bouton de scan
- Oprima el botón escanear
- Premere il pulsante di scansione
- Druk op de scanknop
- Tryck på skanningsknappen

## C Scan the bar code



- Strichcode scannen
- Scannez le code-barres
- Escanee el código de barras
- Scansione il codice a barre
- Scan de barcode
- Läs av streckkoden